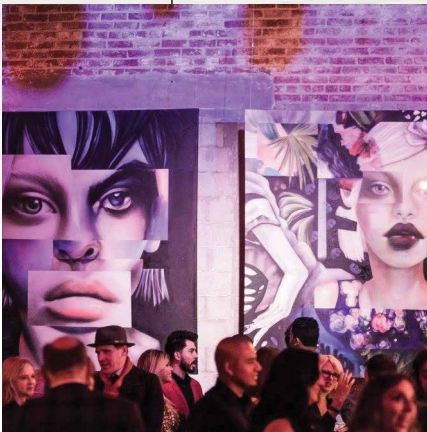




CITY  
MARKET  
SOCIAL HOUSE



THIS OPEN, FREE-FLOWING LAYOUT LOCATED IN THE FASHION DISTRICT OF DOWNTOWN LA WILL BE YOUR NEXT DREAM FILMING DESTINATION!



Originally built in the 1920's, we have converted two old produce warehouses into the hippest space in DTLA boasting over 12,000 square feet of indoor space, and over 3,500 square feet of private outdoor space.

- Exposed brick
- Original bow-truss ceilings
- Traditional barn-style fire door
- Floor to beam ceiling height of 18' in Studio 13
- Floor to beam ceiling height of 12' in Studio 14
- Ample power (to include CAM power)
- HVAC
- New Restrooms
- (3) Loading Docks directly into Studio 14
- Built-In Bar
- Convenient vehicle display access in Studios

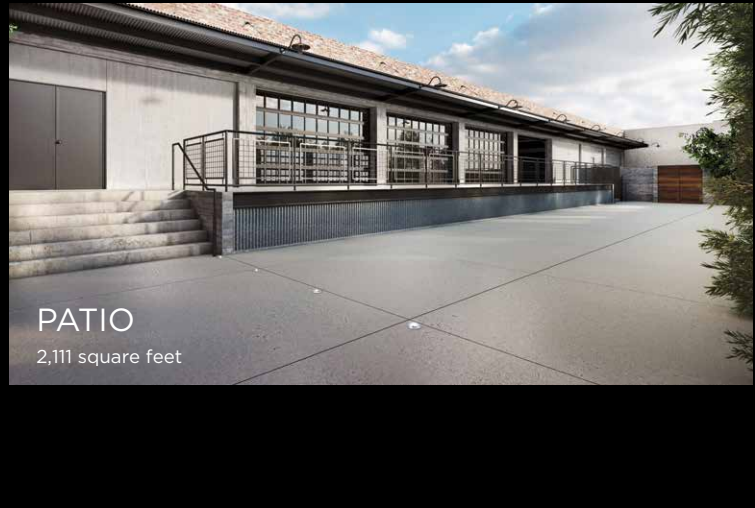
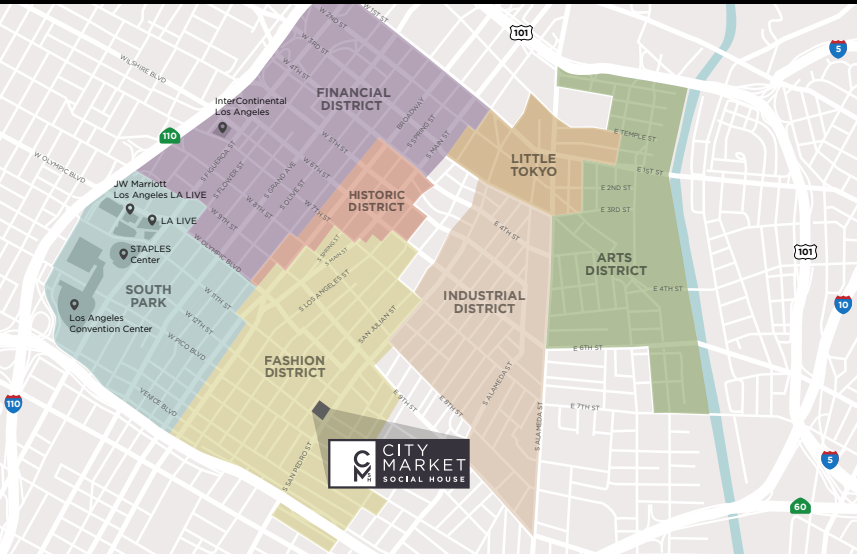




**STUDIO 14**  
8,934 square feet  
12ft floor to beam height



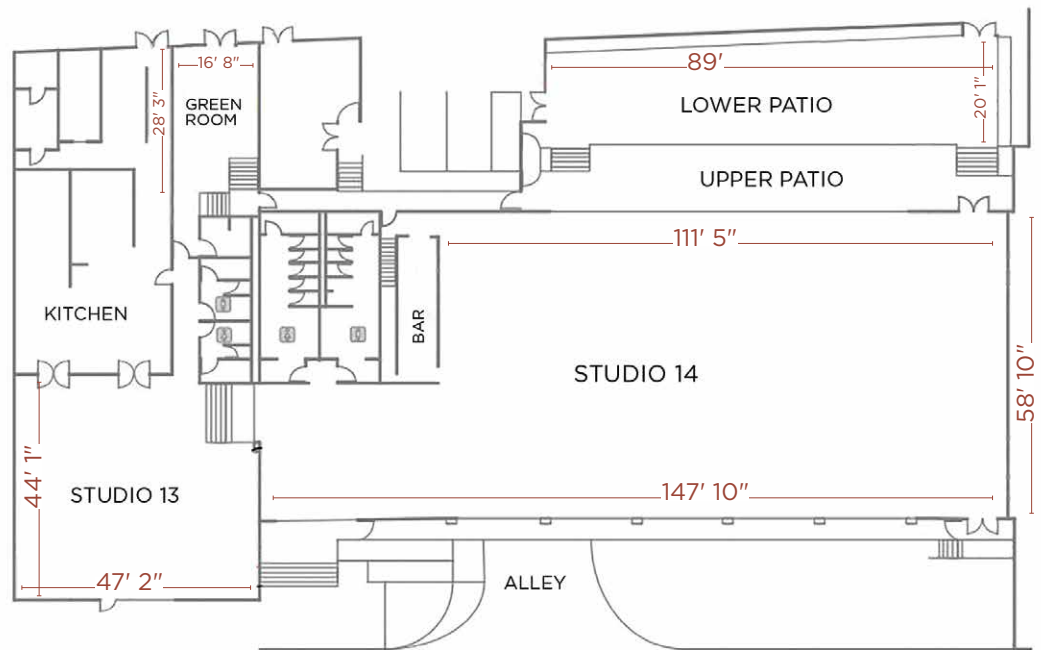
**STUDIO 13**  
2,237 square feet  
18ft floor to beam height



**PATIO**  
2,111 square feet

Located within 1-2 miles of the venue

- Smart and Final
- Home Depot
- Moskatels
- Whole Foods
- Ralphs
- Jason's Liquor



**NOW AVAILABLE FOR SHORT AND LONG TERM FILMING ENGAGEMENTS!**

EVENTS@CITYMARKETSOCIALHOUSE.COM | 844.310.2674

1145 SOUTH SAN PEDRO STREET LOS ANGELES, CA 90015

@CITYMARKETSOCIALHOUSE